

High-Quality and High-Efficiency Decarbonization Products

Contact Us

Discover Micropyretics Heaters International, Inc.



www.mhi-inc.com

750 REDNA TERRACE CINCINNATI, OHIO 45215 USA • PH: 513-772-0404 FX: 513-672-3333

DISCOVER MHI

WHY MHI DECARBONIZATION

Contact Us

REVOLUTIONIZE CLIMATE MITIGATION WITH MHI'S ADVANCED SOLUTIONS

Discover the power of MHI's versatile [Airtorch®](#), [MightySteam®](#), or [Radiative Panels](#) in driving significant climate mitigation. .

Are You Prepared for Zero GHG Emissions?

MHI Inc. provides innovative solutions for zero greenhouse gas (GHG) emissions.

Our technologies ensure compliance with energy-saving [mandates](#) and water conservation and maintain permanent metallic antimicrobial clean surfaces.

Achieve Your Energy Efficiency and Decarbonization Goal

MHI's solutions are tailored for energy-intensive industries, enabling you to meet energy efficiency and deep decarbonization [targets](#) confidently. Benefit from our renowned quality, reliability, customer engagement, and advanced production methods.

Embrace Sustainability Metrics with MHI

Learn More

MHI specializes in highly efficient, high-emissivity, and decarbonizing technologies.

Key Benefits:

- **Energy Savings:** Optimize energy usage with our KW to MW power range systems
- **Sustainability:** Reach zero GHG emissions and adhere to strict environmental mandates.
- **Efficiency:** Enhance energy efficiency in energy-intensive industries.
- **Advanced Technology:** Leverage our expertise in high-emissivity and decarbonizing solutions. MHI is known for quality, reliability, customer engagement, and advanced technology production methods.
- [Contact MHI today](#) to learn how our advanced technologies can help you achieve your climate mitigation and sustainability goals.



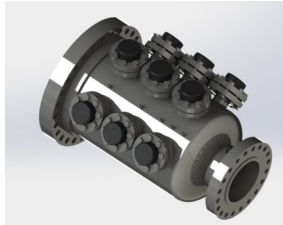
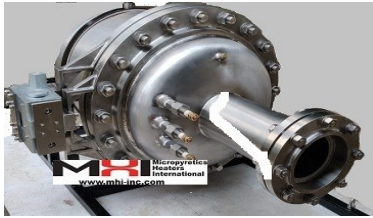
MHI Micropyretics
Heaters
International
www.mhi-inc.com

WWW.MHI-INC.COM • 750 REDNA TERRACE CINCINNATI, OH 45215 • PHONE: 513.772.0404 • FAX: 513.672.3333 • SALES@MHI-INC.COM

DISCOVER MHI

For an Instant Quote, please specify requirements

Air and Gas Heater



Contact Us

Steam Generator



Please specify the following for a quick quotation.

- **Outlet Temperature.**
- **Power of Flow (kg/hr, CFM or kW)**
- **Inlet Temperature.**
- **Pressure-drops not to exceed.**
- **Gas Composition.**
- **Pressure Rating.**
- **Supply Voltage**

Example: Typical Model Number if already known. GTA-4000KW-1200C- PV(10)-480V

Please specify the following for a quick quotation.

- **Desired Steam Output in Kg/hr or kW**
- **Desired Back Pressure Rating**
- **Model number if already known.**
- **Required steam output temperature.**

Pulsing rate for on off if required can be set

For Steam Generators the user only has to set required flow rate, maximum temperature and other features on the touchscreen

Example: Typical Model number if already known. EOAB-500KW-500C-PV(2)-480V



DISCOVER MHI

Quality Efficiency and Applications Across all Temperature Ranges. Pictorial View of MHI Products and Temperatures .



MHI
www.mhi-inc.com



100°C

Food, Paper, and other forms of drying

500-900°C

Petrochemicals, Primary Metals, Cement, Calcination

1800°C

100-500°C

Test Beds

800-1200°C

Reheating, Calcination, Limestone, High Productivity Technologies

Contact Us



MHI Micropyretics Heaters International
www.mhi-inc.com

Contact Us

WWW.MHI-INC.COM • 750 REDNA TERRACE CINCINNATI, OH 45215 • PHONE: 513.772.0404 • FAX: 513.672.3333 • SALES@MHI-INC.COM

DISCOVER MHI

Micropyretics Heaters International, MHI Inc.

MHI has been in business for over 20 years with a stellar performance that encompasses at its core, the tradition of rapid invention and innovation/manufacturing for energy efficiency and environmental impact. MHI headquarters are located in Cincinnati, OH USA. Today the company exports products to over 25 countries world-wide and is one of the few Ohio companies with such an experienced innovation profile. MHI factories are located in Cincinnati and other cities. MHI has close to a thousand customers with good testimonials from all over the world particularly for service and after sales interactions. Over the years, MHI has grown vertically, making its own unique electronics, refractories, materials, controls, software systems, designs and components since 1996. It currently has an extremely versatile, modular platform of technologies and products from which new products and innovations are launched like the nanostructured heaters, one atmosphere superheated steam and Cascade e-Ion Plasma.

MHI Awards:

Governor's Award - Excellence in Energy Efficiency 1996

Ohio's Thomas Edison Program - Energy Technology Award 1999

R&D Award Best 100 Products 1999, 2001, 2004 and 2005

Entrepreneurial Excellence 2002/2003

Hamilton County Development Company - Business Development Award 2003

Fast 50 Award 2004

2005 Corporate Environmental Achievement Award of The American Ceramic Society

Cincy Business Manny Award 2007,

DOE American Invention 2020, T

Todd Portune Climate Savings Award 2022/2023

Contact Us



MHI Micropyretics
Heaters
International
www.mhi-inc.com

Contact Us



Trademark of Micropyretics Heaters International, Inc.
www.mhi-inc.com

WWW.MHI-INC.COM • 750 REDNA TERRACE CINCINNATI, OH 45215 • PHONE: 513.772.0404 • FAX: 513.672.3333 • SALES@MHI-INC.COM

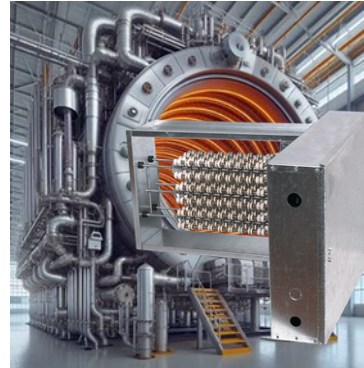
DISCOVER MHI

Why I are MHI Airtorch Units Ideally Suited For Decarbonization



A Fossil Fuel Industrial Heater

Dirty/ Smoke/Soot/ CO₂ & Other GHG's
Highly Energy Inefficient
1 MW produces ~300 Kg/hr. of CO₂ Emissions
Expensive to Maintain



Standard Electric Heater

Clean
Better Energy Efficiency
No GHG's
Easy to Maintain
Limited to 400C
Not Compact

MHI Airtorch® and MightySteam® Electric Heater: Grid-Friendly Technology

- Clean
- Much Better Energy Efficiency
- No GHG's
- Easy to Maintain
- 1200C Capable

Highly Compact 1 MW Systems



Contact Us

MHI Micropyretics
Heaters
International
www.mhi-inc.com

WWW.MHI-INC.COM • 750 REDNA TERRACE CINCINNATI, OH 45215 • PHONE: 513.772.0404 • FAX: 513.672.3333 • SALES@MHI-INC.COM

DISCOVER MHI



MHI ELECTRONICS

380V, 400V, 440V, 480V, 600V, 690V

6/23/2024



MHI Micropyretics
Heaters
International
www.mhi-inc.com

WWW.MHI-INC.COM • 750 REDNA TERRACE CINCINNATI, OH 45215 • PHONE: 513.772.0404 • FAX: 513.672.3333 • SALES@MHI-INC.COM

DISCOVER MHI

Decarbonization and High Temperature Products

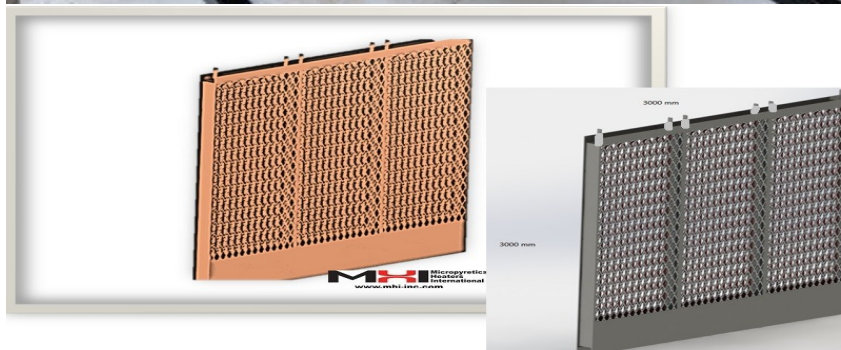
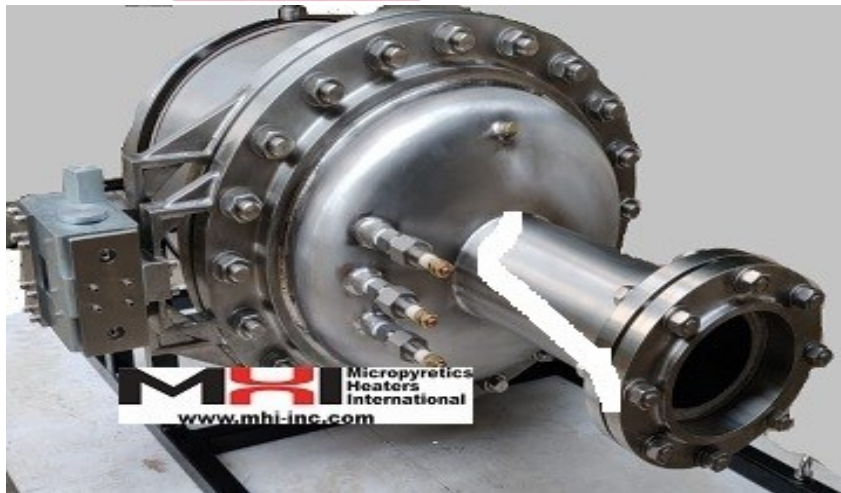
Process Gas and Air Heaters (<https://mhi-inc.com/electric-airtorch-process-gas-heaters-industrial-heat-decarbonize/>) Pages 4-8

Decarbonized Steam Systems (<https://mhi-inc.com/oab-instant-high-temperature-steam-models/>) Pages 9-15

Cascade E-ION (<https://mhi-inc.com/cascade-e-ion-devices-the-most-efficient-plasma-process-for-a-variety-of-applications-in-metals-ceramics-glass-and-plastics/>) Page 23

Glow Panels (<https://mhi-inc.com/radiant-pancake-style-flat-heating-element-for-the-best-performance-and-longest-life/>)

Contact Us



www.mhi-inc.com

WWW.MHI-INC.COM • 750 REDNA TERRACE CINCINNATI, OH 45215 • PHONE: 513.772.0404 • FAX: 513.672.3333 • SALES@MHI-INC.COM

Typical KW	What to Specify	Panels	Typical Picture
------------	-----------------	--------	-----------------

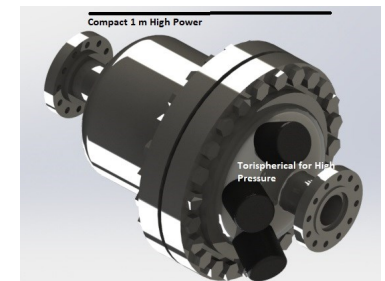
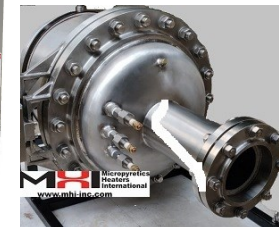
1 KW — 30 KW

KW
Supply Voltage
Type of Gas
Back Pressure (or Shell Pressure)
Type of Connection (Fanged or Threaded)



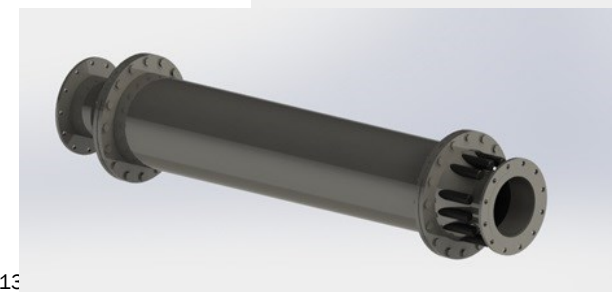
100 KW– 900 KW

KW
Supply Voltage
Type of Gas
Back Pressure (or Shell Pressure)
Type of Connection (Fanged or Threaded)



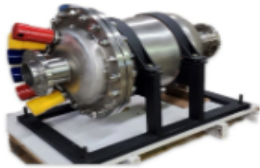
Megawatt

KW
Supply Voltage
Type of Gas
Back Pressure (or Shell Pressure)
Type of Connection (Fanged or Threaded)



MHI Micropyretics Heaters International
www.mhi-inc.com

WWW.MHI-INC.COM • 750 REDNA TERRACE CINCINNATI, OH 45215 • PHONE: 513.772.0404 • FAX: 513



Process Gas Heater



Electric Steam
Generators



Touchscreen
Controls



Industrial Heating
Sectors for
Decarbonization

- Are you mission-ready for zero GHGs (greenhouse gas emissions), energy savings, water savings, and permanent metallic antimicrobial clean surfaces with MHI Inc.'s innovative, sustainable, and climate-responsibility solutions?
- Choose from **Airtorch®**, **MightySteam®**, or **Radiative Panels**. Ask MHI about compact electrical systems that offer energy-saving—units for KW to MW power use.
- Confidently hit your energy efficiency and deep decarbonization **targets** in energy-intensive industries. Leverage MHI's reputation for quality, reliability, and customer engagement for advanced technology products.
- Because of inherent sustainability, deep decarbonization and clean energy use are competitive **advantages**. MHI focuses on highly efficient, high emissivity, decarbonizing technologies to give you a competitive edge.

From KW to MW Compact Decarbonized Electric Industrial Heating



MHI Micropylitics
Heaters
International
www.mhi-inc.com

High-Pressure Electric Airtorch® Models. GTA and GVTA models with high-pressure enclosures.

Years of experience in MHI manufacturing and materials technology. **Large Customer Base.**

From KW to MW systems. High-pressure ASME-rated enclosures. CE or UL ratings as required.

Choose MHI **Airtorch®** Models when the requirement includes:

- High turn down
- High energy efficiency. At 900°C, what does the competition offer as a flow rate? At 1000°C? At 1100°C? At 1200°C?
- Very low-pressure drops
- Compact units
- Rapid heat-up and highly stable temperatures
- MHI uses patented nanostructure surface protections
- Unique HE designs for gases Hydrogen or Mono-Silane for the solar industry.
- High-quality torispherical terminations on pressure vessels.
- High damage tolerance.
- MHI Electric Airtorch® products offer multi-stage heating. Save substantial operating costs over gas heating.

Sometimes, the efficiency of electric Devices is far greater than that of fossil fuel-fired heat exchangers (compare 10 MW to 16 MW in one application).



Contact Us





*For 500Kw – 6 MW
New VSH Airtorch® Model*



18 Bar Airtorch

MHI Micropyretics
Heaters
International
www.mhi-inc.com

Features for Comparison	MHI Airtorch®	Competitor	Why is it important to have a better-constructed unit? How do superior technologies impact a user?
	 www.mhi-inc.com	 COMPANY NAME	
Power: Is the derating of Power required in the Air or Gas heater during use?	No.	Varies could be derated by 20% typically.	Not requiring any derating is a clear advantage. When derated, the user can access only low powers for their application. Derating MW systems is a disadvantage tied to the cost of operation.
The typical powers offered to date by the manufacturer.	1KW - 45 MW in single units. Very versatile.	Generally, do not span this range for a single unit.	
Pressure drop for a high-temperature exit temperature.	Typically, 0.25 psi or as shown in the quote. The pressure drop is reported at the use temperature	Typically, four times more, ~1 psi, or as described by the manufacturer. Please ensure the pressure drop is reported at the use temperature.	A lower pressure drop is an indicator of less energy loss. It often determines the life of the heater. A lower-cost blower can be used when the pressure drop is low. Lower pressure drops are good for dusty gas.
Maximum exit temperature offered.	30°C to 1250°C depending on the model. (About 80°F to 2280°F)	Typically, only 30°C- 700°C. (About 80°F to 1300°F)	A higher temperature capability indicates a higher life even at a lower use temperature.
Electric Panel.	UL 508A or as required.	As listed (the user should inquire whether the entire panel is rated or only the enclosure is rated).	Safety Standards. It is best to follow known electrical codes.
Energy Efficiency.	Typically, 95% and above	Varies: Typically, ~80%.	A higher efficiency is better for process cost and decarbonization.
Does the shell require external insulation? Shell materials.	No. Shell is stainless steel or as requested.	Very often.	Better efficiency. Safety.
Can the shell be rated to ASME or CRN standards?	Yes.	Yes.	Ratings provide safety and uniformity.
SCR Quality and Flexibility for Current Limit?	Phase Angle or Zero Cross Over – software adjustable. The user has complete control.	Varies.	Phase angle and current limit adjustment provide better efficiency and better proportional control, making changes softer and thus improving life.
What is the size of a 1 MW 400°C (750°F heater)	About 24"	Generally, much larger	Compactness offers several advantages, from space to lower transportation and installation costs.
Torispherical terminations.	Yes, almost always.	Generally, it is not provided. Either no termination or Conical.	Pressure vessels commonly employ torispherical terminations.
Provision of Exact Mating Flanges and Pipes	Yes, almost always.	Varies	Ease of installation and compatibility.
The location of the exit process thermocouple.	Typically in the pipe tubing i.e., in the exit flow.	Generally located upstream near the radiator.	The reading should be in the flow when located in the pipe. This is more accurate.
What does the Warranty cover?	Depending on the model, MHI provides a 1-year Warranty on heaters. Not just on manufacturing defects.	Varies. It is unusual to have guaranteed life for heaters.	Quality and Technology is reflected in the Warranty. MHI uses the GAXP® patented long-life heaters.



Air Heater Products

DISCOVER MHI

Airtorch® Small KW (1 kW–10 kW)

Available from the MHI web store <https://mhi-inc.com/product-category/104/136/>



LTA750-01



MTA925-2 2kW (NPT Outlet)

MTA925-02

MTA925-2-SS



LTA750-04



LTA750-02



MTA925-04



VTA750-4GS

Contact Us

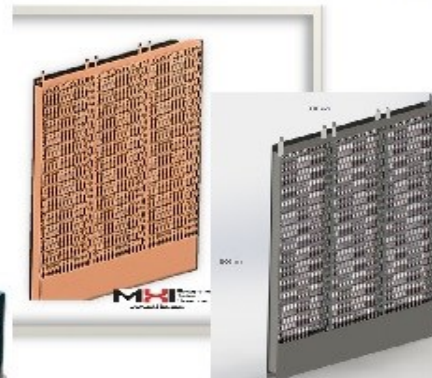
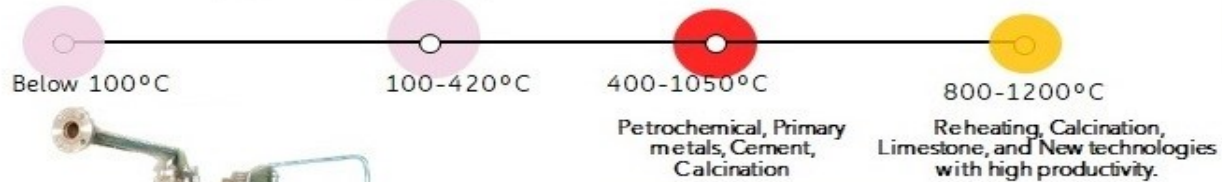


MHI Micropyretics
Heaters
International
www.mhi-inc.com

WWW.MHI-INC.COM • 750 REDNA TERRACE CINCINNATI, OH 45215 • PHONE: 513.772.0404 • FAX: 513.672.3333 • SALES@MHI-INC.COM

DISCOVER MHI

Pictorial view of Application Temperatures and Products



MHI Micropylitics
Heaters
International
www.mhi-inc.com

WWW.MHI-INC.COM • 750 REDNA TERRACE CINCINNATI, OH 45215 • PHONE: 513.772.0404 • FAX: 513.672.3333 • SALES@MHI-INC.COM

Superheated Steam Products. Fully Automated

DISCOVER MHI

OAB® to HIGH TEMPERATURES, HIGH FLOW RATES and HIGH PRESSURES

Contact Us



MHI's OAB superheated steam boiler features patented Insta-Steam™ technology, allowing for rapid startup times, unparalleled efficiencies and up to 1300°C temperatures. BoilerFree™ technology allows most OAB units to be installed without the need for traditional boiler certifications. The OAB is ideal for use as an industrial steam generator, for dewrinkling operations, superheated steam drying and dozens of other specific applications requiring a high efficiency boiler.

Pure Steam. Clean Steam. OAB generate superheated steam that is free of contaminants. The OAB's steam is ideal for pharmaceutical, cosmetics and other industries requiring the highest quality steam. OAB steam is also suitable for use as utility steam in many applications due to its high energy content.

Highly Scalable. OAB units can produce from 1 kg/hr to over 1000kg/hr. Modular design allows for easy upgrades and utilizing the unit where it is needed, all without routing steam or venting pipes.

Efficient. Boiler efficiencies improve when operated at lower pressures. Better conversion factors allow OAB units to use less resources to produce more steam. The OAB's rapid startup results in less energy used getting up to temperature, lower operating costs, less downtime and higher productivity. The output velocity of 550°C steam is almost 40m/s which is useful for uniform heating of kettles.

New flow at a higher stagnation pressure or velocity? Unique Nanostructured isenthalpic pressure enhancers for MHI.



WWW.MHI-INC.COM • 750 REDNA TERRACE CINCINNATI, OH 45215 • PHONE: 513.772.0404 • FAX: 513.672.3333 • SALES@MHI-INC.COM

DISCOVER MHI

Discover High Efficiency Steam

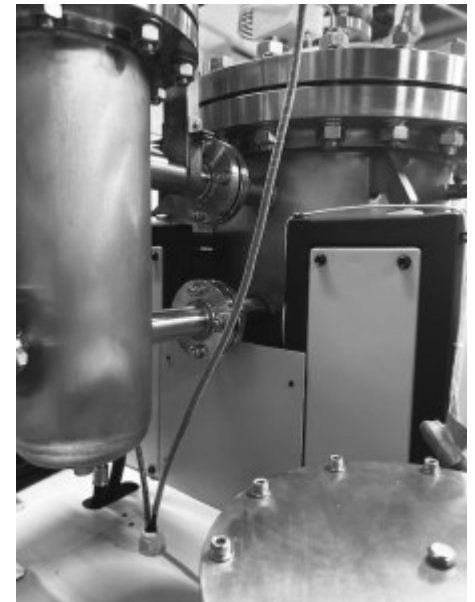
Contact Us



OAB steam generator software control



Today, the need for high-quality, clean electric steam also encompasses zero emissions, high energy efficiency, and minimum spatial footprint configuration requirements. The MightySteam® and [OAB®](#) steam generators produce non-condensing steam above the inversion temperature. Because there are no liquid droplets, the steam is of high quality. This improves steam performance for pharmaceutical use, clean comfort, and utility.



MHI Micropylitics
Heaters
International
www.mhi-inc.com

WWW.MHI-INC.COM • 750 REDNA TERRACE CINCINNATI, OH 45215 • PHONE: 513.772.0404 • FAX: 513.672.3333 • SALES@MHI-INC.COM

Superheated Steam Products For Laboratory

DISCOVER MHI

Superheated Steam. BoilerFree™

Contact Us



HGA-S-01

Exit Temperature	Power	Steam Output
400°C	~1 kg/hr	1Kg/Hr



HGA-M-01

Exit Temperature	Power	Output
650°C	~1 kg/hr	Steam Gas Mixture



HGA-S-01-CX1300

HGA-S-02-CX1300

Exit Temperature	Power	Output
1300°C	Call	1Kg/hr

Contact Us



OAB 4

OAB12

Exit Temperature	Power	Output
150°C–400°C	Depends on Model	4 Kg/hr or 12 Kg/hr

Contact Us

MHI Micropylitics
Heaters
International
www.mhi-inc.com

WWW.MHI-INC.COM • 750 REDNA TERRACE CINCINNATI, OH 45215 • PHONE: 513.772.0404 • FAX: 513.672.3333 • SALES@MHI-INC.COM

DISCOVER MHI

STEAM FOR HIGH ENERGY SAVINGS PACKAGING

Whether for safety, aesthetics or combo-packaging, shrink-wrap is one of the fastest growing packaging solutions. However, shrink wrap traditionally has carried with it expensive energy and water usage. Now with the advent of OAB® steam it is possible that one may easily save 85-95% energy and water.

Rapid labelling even for filled bottles and for bottles with unusual curvature has never been easier. Move towards 90% savings in energy and water even with complex bottles.

Machines Specifications:

- 1 SW-OAB-12-300 - [Download Specs sheet](#) (For medium loads)
- 2 SW-OAB-4-550 - [Download Specs sheet](#) (For small loads)
- 3 Hybrid-SW OAB-12-300-4 [\(For high speed super saving loads\).](#)

MHI is a leader in hybrid designs for batch and continuous loads.



Tunnel Designs and Basic Tunnels are free with the OAB® System for CPG shrink wrap. For some models, the belt is provided at no charge.

- 1 Simple and Elegant. Multiple wall. Heat contained. Designed by thermal leader MHI. Simple lift off. Light weight.
- 2 Modular - Each Zone is three to five feet. Some basic tunnels and even belts are free.
- 3 Turn OAB® on and off . No need to idle. Move OAB® across various SW lines if required.
- 4 Easy adjustment by flaps and height adjusters for entire tunnel when required.
- 5 Intuitive Design - Graduated indicators simplify setups and adjustments.
- 6 Use with 12 kW OAB® steam. Overcome the energy disadvantage of traditional 150kW- 300 kW (15-30 BHP) Boilers. Reduce your cost per label.



DISCOVER MHI

One Atmosphere Boiler—Applications

Shrink Labeling



Vat Heating for the
Food and Beverage
Industry



MHI Micropyretics
Heaters
International
www.mhi-inc.com

WWW.MHI-INC.COM • 750 REDNA TERRACE CINCINNATI, OH 45215 • PHONE: 513.772.0404 • FAX: 513.672.3333 • SALES@MHI-INC.COM

Superheated Steam Products (low kW)

DISCOVER MHI

Superheated Steam. BoilerFree™



HGA-S-CX1300

Superheated steam up to 1300°C

BoilerFree™ technology allows for one atmosphere operation

Quiet operations

Small footprint. No boilers or piping to route.

Plug and play. Most superheated steam devices feature plug and play operations.

Rapid start-up times. BoilerFree™ generates steam faster and without a high pressure boiler.

Can produce Steam or Steam/Gas Mixture, depending on model.



HGA-M Devices

Contact Us



HGA-S Devices

Laboratory class: Available at www.mhi-inc.com/store

MHI Micropylitics
Heaters
International
www.mhi-inc.com

WWW.MHI-INC.COM • 750 REDNA TERRACE CINCINNATI, OH 45215 • PHONE: 513.772.0404 • FAX: 513.672.3333 • SALES@MHI-INC.COM

Superheated Steam Products

DISCOVER MHI

OAB Steam Generator Comparison with Boilers

Feature	MHI's OAB® MightySteam®	Water Tube Steam Boilers	Electric High Pressure Steam Boilers
Maximum Steam Temp.	300 °C—1300 °C Standard	600 ° with Economizer and Superheater	135 °C for 3 bar steam
Efficiency	~95%	<90%	~85% - 95%
Idle Energy Waste	Low (Choice of Continuous or On-Off steady-state steam)	High	Moderate
Non Steam Producing Energy Usage Time	Almost Instant	60+ minutes. Becomes slower with higher pressures and volume requirements	~60Minutes. Becomes slower with higher pressures and volumes. (Not including cool down and pressure release for autoclaves)
Suggested Inlet Temp.	Tap	4-16 °C	20-35 °C
Capital Cost per Kg of Steam	Low	High	Moderate. Depends on temperature/pressure required.
Operational Costs	Low	High	Low-Moderate
Unit Footprint	Starting at 1' x 1' x 1'	Large	Depends on size and pressure requirements
Plug & Play Operations	Yes	No	No
Requires Boiler Certifications	No	Yes	Yes
Downtime	Low(Unit can be used for continuous steady-state steam) Because of the low foot print MHI Never Down Service is available	Low-Moderate	Low



WWW.MHI-INC.COM • 750 REDNA TERRACE CINCINNATI, OH 45215 • PHONE: 513.772.0404 • FAX: 513.672.3333 • SALES@MHI-INC.COM

Superheated Steam Products

DISCOVER MHI

OAB

Feature	MHI's OAB® MightySteam®	Water Tube Steam Boilers	Electric High Pressure Steam Boilers
Utilizes Combustion (Requires Ventilation)	No	Yes	No
Energy Needed to produce 100kg/hr steam	~ 73 kWh	~150-200 kWh Equivalent (Including start up time consumption)	~150-200 kWh Equivalent (Including start up time consumption)
Power weight [Kg Equipment/(Kg/hr) of steam] for a 100kW Generator	~2 Kg per Kg/hr of steam	~5 Kg per Kg/hr of steam (Weight increases with temperature/pressure)	
Maximum Work Potential (Based on second law limitation) Base is 1 Bar 100C liquid water for all	672 kJ/Kg for 500°C superheated steam 1973 kJ/Kg for 1300°C superheated steam	755 kJ/Kg for 10 Bar saturated steam 1169 kJ/Kg at 100 Bar saturated steam	Generally not used for creating work
Enthalpy (heat) Content	3489 kJ/Kg for 500°C superheated steam at 1 Bar	2777 kJ/Kg for 10 Bar saturated steam	2725 kJ/Kg for 3 Bar saturated steam
Running at Partial Capacity	With MHI Electronic Controls, No loss of efficiency	Significantly lower efficiencies, if model is capable	Lower efficiencies
Air Contamination	Extremely high operation temperature	Air contamination harms output	No air contamination is allowed (strict)
Piping Losses	Discrete, locatable units reduce necessary piping. Low, 1 atmosphere pipe pressure.	High pipeline pressure combined with long piping distances leads to heat loss and dangerous conditions in the event of pipe failure.	High pipeline pressure combined with long piping distances leads to heat loss and dangerous conditions in the event of pipe failure.
How far can I run my pipe?	Call MHI	Call MHI	Call MHI

Cascade e-Ion Plasma™ Products

DISCOVER MHI

Rapid Heat. Unparalleled Efficiency.

Contact Us



Cascade e-Ion Plasma™

Rapid 200°C per second heating rate with large aperture

Produces plasma plume containing ions, electrons, radiation and hot gas

Great for RTP (rapid thermal processing) applications. Ideal for thin film deposition and processing, heat treating, surface enhancing, brazing and a number of other processes

Capable of treating a variety of materials, including plastics, metals and a number of other surfaces.

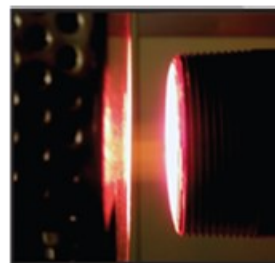
Silent operation

No combustion related residues, fumes or safety issues.

Energy efficient alternative to electron beam, lasers or induction.



e-Ion Plasma™ Source
Base unit with large aperture



e-Ion Zapper™
Ion concentrator for metals/ceramics



e-Ion LIP System
Production system for plastics

MHI Micropyretics
Heaters
International
www.mhi-inc.com

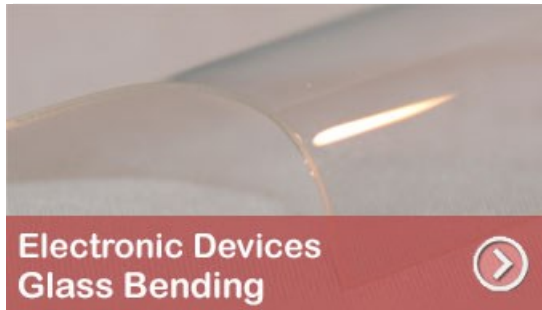
WWW.MHI-INC.COM • 750 REDNA TERRACE CINCINNATI, OH 45215 • PHONE: 513.772.0404 • FAX: 513.672.3333 • SALES@MHI-INC.COM

Cascade e-Ion Plasma™ Products

DISCOVER MHI

CleanElectricFlame™ Case Studies Solutions

Contact Us



See our web site at
www.mhi-inc.com
for in depth case study results

MHI Micropylitics
Heaters
International
www.mhi-inc.com

WWW.MHI-INC.COM • 750 REDNA TERRACE CINCINNATI, OH 45215 • PHONE: 513.772.0404 • FAX: 513.672.3333 • SALES@MHI-INC.COM

DISCOVER MHI

R&D Use High Temperature Products

Contact Us



Microheaters



Robust Radiators



Elements



Control Panels

Temperature Range	Up to 1900 °C	Up to 1700 °C	Up to 1900 °C	N/A
Description	High temperature micro-scaled heaters with a variety of configurations. Easy to integrate into existing systems. Small design allows for versatile applications.	Ideal for use in applications requiring high temperatures in close quarters. Easily mountable, allowing for diverse number of applications. Stainless steel shell adds to durability and versatility.	Molybdenum disilicide elements offer temperature up to 1900 °C. NoAge™ Silicon Carbide offer high temperatures and long life from our patented technology. GAXP™ offer high efficiency and reliability.	Control panels allow users to program heating cycles and record data. Most controls are remotely locatable, allowing for centralized control of multiple devices.
Features	Small footprint Temperatures up to 1900 °C	Robust construction Vertical or horizontal operations	Long lasting Variety of accessories High performance	Programmable Remotely locatable Easy to use
Benefits	Small size, high power	Versatile heat where needed	High temp., highly efficient	Improve heating processes



WWW.MHI-INC.COM • 750 REDNA TERRACE CINCINNATI, OH 45215 • PHONE: 513.772.0404 • FAX: 513.672.3333 • SALES@MHI-INC.COM

Furnace Products

DISCOVER MHI

High Temperature. High Quality. High Uniformity.



MHI furnaces meet the highest standards of quality, energy efficiency, and performance. From the laboratory scale Z-Series box furnace, robust motorized bottom-loading/opening furnace, to our novel steam furnaces with a rapid heat-up rate, MHI has a high temperature heating solution for even the most demanding user. From laboratory, lab scale, prototyping to large scale with established high safety heating devices, furnaces and refractories.



Box Furnace



Horizontal Tube Furnace



Motorized Bottom Opening Furnace



Metallic tube shown is 5.75" dia. x 50" L New Quick Disconnect End Cap

Horizontal Tube Industrial Scale

MHI Micropyretics
Heaters
International
www.mhi-inc.com

WWW.MHI-INC.COM • 750 REDNA TERRACE CINCINNATI, OH 45215 • PHONE: 513.772.0404 • FAX: 513.672.3333 • SALES@MHI-INC.COM

Glow Panel Products

DISCOVER MHI

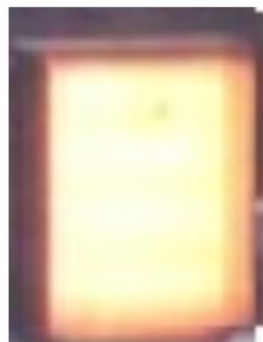
GloW Panels

Contact Us

KW to MW Radiant Panel
Heaters with Controls.

High Flux High Temperature.
Patented Radiating Surfaces.

Contact MHI



Radiant Flat Heaters (Electric) for Industrial Applications

[High Flux \(Thermoplates\)](#)

[Decarbonization Principles](#)



Box Furnace



Horizontal Tube Furnace



Motorized Bottom Opening Furnace



Horizontal Tube Industrial Scale

Metallic tube shown is 5.75" dia. x 50" L. New Quick Disconnect End Cap

MHI Micropyretics
Heaters
International
www.mhi-inc.com

WWW.MHI-INC.COM • 750 REDNA TERRACE CINCINNATI, OH 45215 • PHONE: 513.772.0404 • FAX: 513.672.3333 • SALES@MHI-INC.COM

Furnace Products

DISCOVER MHI

High Temperature. High Quality. High Uniformity.

[Contact Us](#)

- **Safety:** Double walled Stainless Steel construction. This along with the FiberFree™ refractory allow for a safe exterior working environment (~50 °C or lower). MHI furnaces, where applicable, have three-arm balanced swing away doors that keep the hot surface side away from users.
- **Warranty:** Contact us to learn about the best warranty for your furnace.
- **High Temperature Furnace Classes:** Almost all MHI furnaces are lined with non-toxic FiberFree™ refractory in the furnace chamber. FiberFree™ refractory is a safe-to-use insulation which does not contain any toxic short fibers.
- **Non-sag roof technology:** MHI also uses the unique FiberFree™ refractory for the roof of most furnaces. This novel refractory does not crack during cycling at operating temperatures which allows for longer life of the furnace and longer life from the heating elements. Less cracks and longer life means you will be running your furnace for efficiently and have an overall savings (monetary, energy, replacement materials, etc.) This FiberFree™ material advantage is uniquely available from MHI.
- **Robustness:** MHI uses nanofractal roof hangers.
- **Unique Hearth Designs:** Several bottom loader type furnaces now have floors that come standard with removable hearths. On large bottom loading furnaces we have added a new design feature, which makes the already sturdy door-top fully removable and lockable. If you ever damage the floor of the door—simply change out this piece without incurring the larger cost for the entire door. Hearths can reach 2000 °C operating temperatures with the unique non-toxic FiberFree™ refractory.
- **Uniformity:** As high at +/- 2°C temperature uniformity for small chambers. Slightly more as the size increases. Uniformity is related to insulation quality and quantity, furnace design, best heating elements and high class control system that for example are easily accepted in US government laboratories. Overall care matters when mating ceramics, thick gauge stainless steel and high temperature heating elements. We often find MHI provides an additional layer of insulation compared to other manufacturers and provides the latest in feedback control electronics.
- **Our heating elements routinely outperform:** MHI offers the highest temperatures and longest life available in MoSi2 heating elements.
- **Awards:** MHI has received the prestigious R&D100 and other awards for its heating elements, refractory materials and furnaces. This shows our commitment to innovation and continuous improvement so that you have the highest quality and best performing furnaces.
- **Versatile:** MHI furnaces are used in diverse applications from chemical processing, vapor deposition, nano scale processing, materials processing and energy conversion from R&D to prototype to industrial scale operations.



WWW.MHI-INC.COM • 750 REDNA TERRACE CINCINNATI, OH 45215 • PHONE: 513.772.0404 • FAX: 513.672.3333 • SALES@MHI-INC.COM

Furnace Products

Contact Us

DISCOVER MHI

1700°C - 1800°C Max. High Quality. High Uniformity.



Model	Temperature	Chamber Size
Z18-40	Up to 1760°C (1800°C/3272°F Max)	6" H x 5" W x 6" D
M18-40	Up to 1760°C (1800°C/3272°F Max)	12" H x 12" W x 16" D
Single Zone Horizontal Furnace		
H18-40HT	Up to 1760°C (1800°C/3272°F Max)	2.5" D x 12" L
3-Zone Horizontal Tube Furnace		
3H18-40HT2.5x27	Up to 1760°C (1800°C/3272°F Max)	2.5" D x 27" L
Vertical Split Tube Furnace		
3H11-17VST	1100° - 1700° (2012–3092°F)	3: D x 8" L
Bottom Loading Furnace		
H18-40BLE	Up to 1760°C (1800°C/3272°F Max)	8" H x 9" W x 9" D
H18-40BLE12x12	Up to 1760°C (1800°C/3272°F Max)	12" H x 12" W x 12" D
H18-40BLE15x15	Up to 1760°C (1800°C/3272°F Max)	15" H x 15" W x 15" D
H18-40BLE18X18	Up to 1760°C (1800°C/3272°F Max)	18" H X 18" W X 18" D

MHI Micropyretics
Heaters
International
www.mhi-inc.com

WWW.MHI-INC.COM • 750 REDNA TERRACE CINCINNATI, OH 45215 • PHONE: 513.772.0404 • FAX: 513.672.3333 • SALES@MHI-INC.COM

Furnace Products

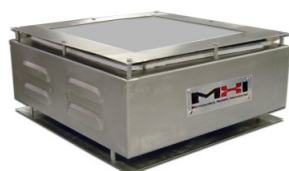
Contact Us

DISCOVER MHI

Specialty Furnaces. High Quality. High Uniformity.



CSF1700



HP220-HIGHBO-1250



HEATPAD-THM-500-1



Vertical Split Tube

Model	Maximum Temperature
CSF1700	1700 °C

Model	Maximum Temperature	Maximum Power	Heated Surface Dimensions
HP220-HIGHBO-	1250°C	3000W	9" W X 9" and 18"x18"
HeatPad T HM-500-1	1000 °—1600°		1" Diameter with comprehensive controls

Model	Continuous Operating Temperature	Chamber Size
3H14VST-GAXP	1400 °C	3" D x 8" L
H14-GAXP	1400 °C	
M14-GAXP	1400 °C	12" H x 12" W x 16" D
H14BLE15x15-GAXP	1400 °C	15" L x 15" D
575H14HT-GAXP	1400 °C	

MHI Micropyretics
Heaters
International
www.mhi-inc.com

WWW.MHI-INC.COM • 750 REDNA TERRACE CINCINNATI, OH 45215 • PHONE: 513.772.0404 • FAX: 513.672.3333 • SALES@MHI-INC.COM

Microheater™ Products

Contact Us

DISCOVER MHI

Small Size. High performance.

High power devices with minimal footprint.

Small heaters with temperatures up to 1900°C

High watt density allows for efficient heating in numerous applications.

Multiple configurations allow for easy integration into existing processes.

Excellent for Research and Development and Laboratories.

Suggested uses include: substrate heating, crucible heating and fiber heating amongst others.



GUHE-10-SS



MC-MP1900-350-IPL



FIBHEAT200



THM-200 with
Quartz Tube



WWW.MHI-INC.COM • 750 REDNA TERRACE CINCINNATI, OH 45215 • PHONE: 513.772.0404 • FAX: 513.672.3333 • SALES@MHI-INC.COM

Microheater™ Products

[Contact Us](#)**DISCOVER MHI****Fiber Heaters Specialty Microheaters**

Model	Maximum Temperature	Key Selection
THM-200	~1700 °C	2mm ID Quarts Tube
THM-500	~1700 °C	6mm ID Quartz Tube
THM-500-XRD	~1700 °C	6mm ID Quartz Tube with Orthogonal holes for X-ray beams



Model	Maximum Temperature	Key Selection
FIBHEAT200	1900 °C	Dim. 1.13" W x 1.13" D x 2.13" H
FIBHEAT200-XRD	1900 °C	Custom X-ray slot Partial slot opening (60° from center)



WWW.MHI-INC.COM • 750 REDNA TERRACE CINCINNATI, OH 45215 • PHONE: 513.772.0404 • FAX: 513.672.3333 • SALES@MHI-INC.COM

Microheater™ Products

Contact Us

DISCOVER MHI



Model	Maximum Temperature	Specifications
GUHE-10-SS	1900°C	300 Watts
GUHE-3-SS	1900°C	Narrow 3mm zone



Model	Maximum Temperature	Specifications
PH-G4-1	1250°C	1" Hot Zone
PH-G4-2	1250°C	2" Hot Zone



Model	Maximum Temperature	Specifications
MPT20	1000°C—1900°C	100 Watts



Model	Maximum Temperature	Specifications
MHGI-1250	1200°C—1900°C	30 Watts



WWW.MHI-INC.COM • 750 REDNA TERRACE CINCINNATI, OH 45215 • PHONE: 513.772.0404 • FAX: 513.672.3333 • SALES@MHI-INC.COM

Microheater™ Products

Contact Us

DISCOVER MHI

Small Size. High performance.



Model	Maximum Temperature	Specifications
MC-MP1900-150	1900 °C	1" Serpentine, ~ 500 Watts
MC-MP1900-150-IPL	1900 °C	1" Serpentine, In Line Plane, ~500 Watts
MC-MP1900-300	1900 °C	2" Serpentine, ~1100 Watts
MC-MP1900-300-IPL	1900 °C	2" Serpentine, In Line Plane, ~1100 Watts
MC-MP1900-170	1900 °C	1" Spiral, ~ 500 Watts
MC-MP1900-170-IPL	1900 °C	1" Spiral, In Line Plane, ~500 Watts
MC-MP1900-350	1900 °C	2" Spiral, ~1100 Watts
MC-MP1900-350-IPL	1900 °C	2" Spiral, In Line Plane, ~1100 Watts

MHI Micropyretics
Heaters
International
www.mhi-inc.com

WWW.MHI-INC.COM • 750 REDNA TERRACE CINCINNATI, OH 45215 • PHONE: 513.772.0404 • FAX: 513.672.3333 • SALES@MHI-INC.COM

Microheater™ Products

Contact Us

DISCOVER MHI

Small Size. High performance.



Model	Maximum Temperature	Specifications
MC-GAXP-30	1400 °C	1" Ceramic Base Included Connectors Included
MC-GAXP-130	1400 °C	2" Ceramic Base Included Connectors Included
MC-GAXP-375	1385 °C	3" Ceramic Base Included Connectors Included
MC-GAXP-485	1385 °C	3.5" Ceramic Base Included Connectors Included
MC-GAXP-6.5	1400 °C	Ceramic Base 14" x 14" x 2" Included Connectors Included

MHI Micropyretics
Heaters
International
www.mhi-inc.com

WWW.MHI-INC.COM • 750 REDNA TERRACE CINCINNATI, OH 45215 • PHONE: 513.772.0404 • FAX: 513.672.3333 • SALES@MHI-INC.COM

RobustRadiator™ Products

Contact Us

DISCOVER MHI

Modular Heating. Highly Customizable.



MHI Patented MP1900 and MagnaCoil Heating Elements

Non-toxic, high performance FiberFree™ Refractory

May be operated in Vertical or Horizontal orientations

Fully Controllable

Optional Stainless Steel Casing for Easy Mounting

Customizable and Made-To-Order

Max Temperature 1400°C—1700°C

Fully controllable (BPAN-O-2014 Recommended)

Ideal for tube/pipe heating, annealing, wafer production, crystal growth, material testing, crucible melting and a variety of other R & D and production applications.



RHUL-MP2125-4



RHUL-MP4125-4



IRHUL-MP4125-4



IRHUL-MP4125-4

MHI Micropyretics
Heaters
International
www.mhi-inc.com

WWW.MHI-INC.COM • 750 REDNA TERRACE CINCINNATI, OH 45215 • PHONE: 513.772.0404 • FAX: 513.672.3333 • SALES@MHI-INC.COM

RobustRadiator™ Products

DISCOVER MHI

Modular Heating. Highly Customizable.

Model	Temperature	Maximum Power	Heated Length	Overall Length	ID	OD
RHUL-MP1125-4	1400°C–1700°C	825 Watts	2"	4"	1"	5"
RHUL-MP2125-4	1400°C–1700°C	1428 Watts	2"	4"	2"	6"
RHUL-MP3125-5	1400°C–1700°C	2925 Watts	2"	4"	4"	8"
RHUL-MP4125-4	1400°C–1700°C	3075 Watts	3"	5"	3"	7"
RHUL-MP1125-4-SS	1400°C–1700°C	825 Watts	2"	4"	1"	5"
RHUL-MP2125-4-SS	1400°C–1700°C	1428 Watts	2"	4"	2"	6"
RHUL-MP3125-5-SS	1400°C–1700°C	2925 Watts	2"	4"	4"	8"
RHUL-MP4125-4-SS	1400°C–1700°C	3075 Watts	3"	5"	3"	7"



WWW.MHI-INC.COM • 750 REDNA TERRACE CINCINNATI, OH 45215 • PHONE: 513.772.0404 • FAX: 513.672.3333 • SALES@MHI-INC.COM

RobustRadiator™ Products

Contact Us

DISCOVER MHI

Modular Heating. Highly Customizable.

Model	Temperature	Maximum Power	Heated Length	Overall Length	ID	OD
MRCL-GA1125-4	1450 °C	600 Watts	2"	4"	1"	5"
MRCL-GA2125-6	1450 °C	Call	4"	6"	5"	9"
MRCL-GA3125-6	1450 °C	Call	4"	6"	2"	6"
MRCL-GA4125-6	1450 °C	Call	4"	6"	4"	8"
MRCL-GA5125-6	1450 °C	Call	4"	6"	3"	7"
MRCL-GA7125-10	1450 °C	Call	8"	10"	7"	11"
Model	Temperature	Maximum Power	Heated Length	Overall Length	ID	OD
SLH-1.5	1500 ° - 1700 °C	350 Watts	.025"	2"	1.5"	5"
SLH-3.0	1500 °C—1700 °C	800 Watts	.25"	2"	3"	6.5"



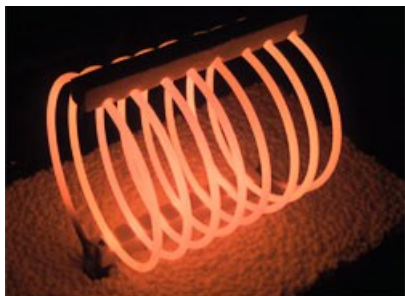
WWW.MHI-INC.COM • 750 REDNA TERRACE CINCINNATI, OH 45215 • PHONE: 513.772.0404 • FAX: 513.672.3333 • SALES@MHI-INC.COM

MagnaCoil™ Elements

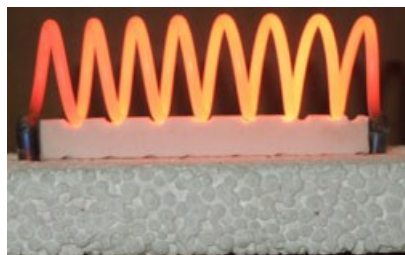
Contact Us

DISCOVER MHI

High Performance. High Value.



MC-8/3/4/4 with CHS-OD



MC-8/1/4/4 with CHS-OD Coil
Spacer and Refractory



MagnaCoil™ heating elements offer temperatures up to 1450 °C

Coil sizes range from 1" to 5"

Inline, Cross-line, in-plane and cross-line out of plane are the most popular configurations offered.

Coils feature high power handling and exceptional service lifespans.

Model	Coil In- side Di- ameter	Coil Length	Approx. Num- ber of turns	Max. Watts
MC-8/1/4/4	1"	4"	8	.7kW
MC-8/2/4/4	2"	4"	8	1.3kW
MC-8/3/4/4	3"	4"	8	2.0kW
MC-8/4/4/4	4"	4"	8	2.5kW
MC-8/5/4/4	5"	4"	8	3.2kW

MHI Micropylretics
Heaters
International
www.mhi-inc.com

WWW.MHI-INC.COM • 750 REDNA TERRACE CINCINNATI, OH 45215 • PHONE: 513.772.0404 • FAX: 513.672.3333 • SALES@MHI-INC.COM

GAXP™ Elements

Contact Us

DISCOVER MHI

High Performance. High Value.



U-Shaped Hairpin	Lu:	Le:	A:
Design Power in well insulated furnace	Le x 2 x 50W/inch		

Patented technology helps create highly efficient and reliable heating elements rated for use up to 1450°C.

Variety of shapes including U-Shaped hairpins, dumbbell and U-Shaped hairpin bent.



Dumbbell	Cz:	Hz:
Design Power in well insulated furnace	Hz x 50W/inch	

Compatible for use in a number of environments.

Use for oxidation, carbon reduction, neutral environments or in combustion processes.



U-Shaped Hairpin Bent	Luh:	Le:	A:
Design Power in well insulated furnace	Le x 2 x 50W/inch		

MHI Micropyretics
Heaters
International
www.mhi-inc.com

WWW.MHI-INC.COM • 750 REDNA TERRACE CINCINNATI, OH 45215 • PHONE: 513.772.0404 • FAX: 513.672.3333 • SALES@MHI-INC.COM

Molybdenum DiSilicide Elements

DISCOVER MHI

High Performance. High Value.



U-Shaped Hairpin	Lu:	Le:	A:
Classes	MP1850		

Patented technology helps create our highest temperature heating elements rated for use up to 1900°C



U-Shaped Hairpin Bent	Lu:	Le:	A:
Classes	MP1800—MP1900		

Variety of shapes including U-Shaped hairpins, dumbbell and U-Shaped hairpin bent.

Sizes available include 3/6, 4/9, 6/12 and 9/18.



Pancake Elements	Model	Power	Element Shape
	UPESP-6.5	~6000W	Complex

Compatible for use in a number of environments.

Use for oxidation, carbon reduction, neutral environments or in combustion processes.



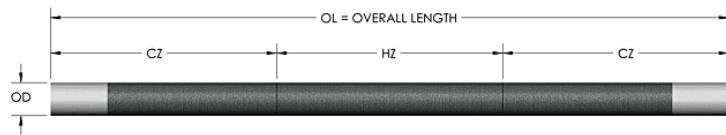
WWW.MHI-INC.COM • 750 REDNA TERRACE CINCINNATI, OH 45215 • PHONE: 513.772.0404 • FAX: 513.672.3333 • SALES@MHI-INC.COM

NoAge™ Silicon Carbide Elements

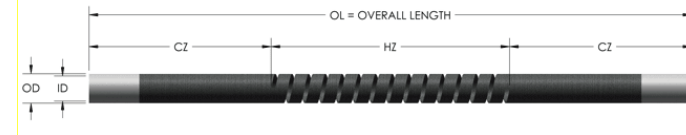
DISCOVER MHI

Contact Us

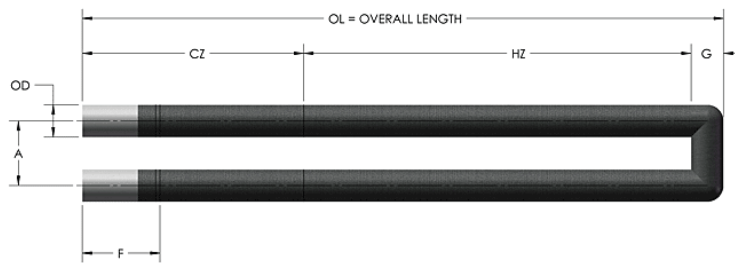
Minimum order 20 Units



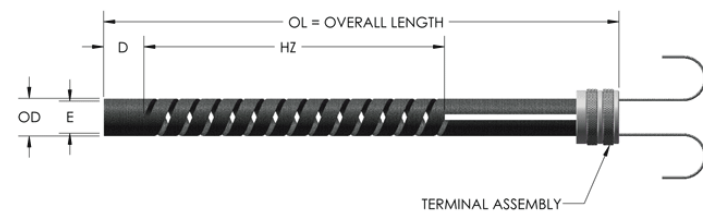
RX1 Type



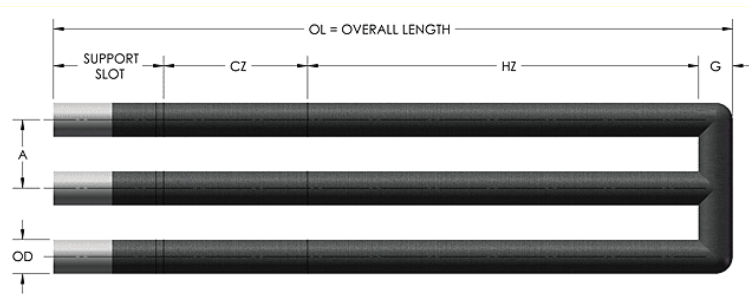
X Type



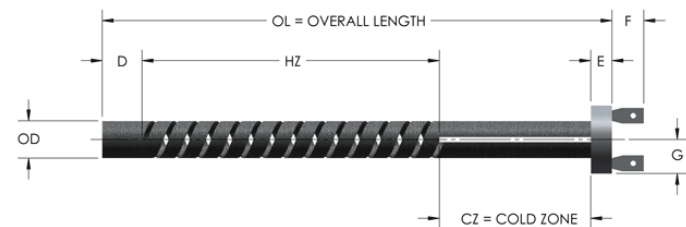
RX2 Type



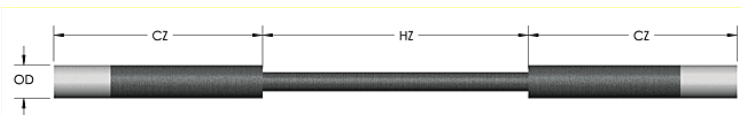
DM Type



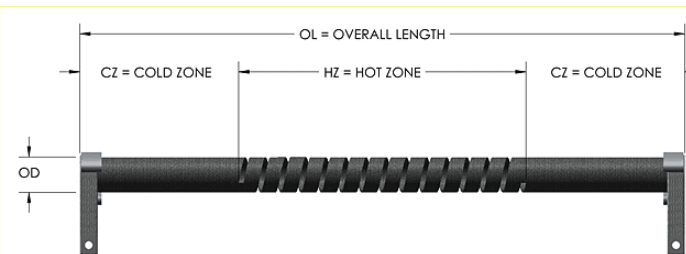
RX3 Type



DS Type



Dumbbell Type



MF Type

MHI Micropylitics
Heaters
International
www.mhi-inc.com

WWW.MHI-INC.COM • 750 REDNA TERRACE CINCINNATI, OH 45215 • PHONE: 513.772.0404 • FAX: 513.672.3333 • SALES@MHI-INC.COM

Accessory Packages

DISCOVER MHI

Quicker Delivery. Less Downtime.

Contact Us



MHI offers the highest quality heating element accessories available to keep your furnace working at peak efficiency. MHI accessories are used for all MHI furnaces and many other modern high temperature furnaces, from small laboratory to production size furnaces. We also offer quick disconnect end caps for tube furnaces.

Full Accessory Kits

- Heating Elements
- Element Holders
- Connecting Wire
- Connecting Clips
- TC Extension Cable
- Replacement Ceramic
- Fan
- Alumina Tube
- Mullite Tube
- Metallic End Caps
- Ceramic End Caps
- Terminal Block
- Thermocouple
- Fuse



WWW.MHI-INC.COM • 750 REDNA TERRACE CINCINNATI, OH 45215 • PHONE: 513.772.0404 • FAX: 513.672.3333 • SALES@MHI-INC.COM

Controllers

DISCOVER MHI

Programmable Cycles. Remotely Locatable. HMI and PLC

Contact Us

Electrical Panels controllers allow for better process control through the use of programmable steps and precise temperature controls. Most controllers include over-temperature controllers. Durable stainless steel enclosures.

Ability to locate controls remotely from device, allowing centralized control of multiple heating devices.

Single phase and 3 phase compatible models.

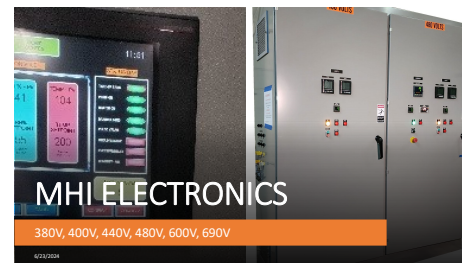
Helps improve energy use through more efficient temperature control.



HIPAN-2014—XPAN-2014



BPAN-O-2014—BPAN-O-PLUS-2014



MHI Micropylretics
Heaters
International
www.mhi-inc.com

WWW.MHI-INC.COM • 750 REDNA TERRACE CINCINNATI, OH 45215 • PHONE: 513.772.0404 • FAX: 513.672.3333 • SALES@MHI-INC.COM

MHI-DACS

DISCOVER MHI

Record Data. Improve Processes

Contact Us

DACS—Data Acquisition Control Software v7.2 for MHI Furnaces, Airtorch™ and other devices



MHI DACS1 and DACS2

- Do your projects faster. The MHI Data Acquisition and Control Software offers unparalleled control and data management.
- Remotely turn ON/OFF MHI devices.
- Easily download data, create cycle programs, provide graphical analysis and monitor and manage up to 12 MHI Heating devices.
- Fully programmable up to 16 programmable steps.
- Great for controlling multi-zone furnaces or multiple furnaces simultaneously.

DACS2

- Advanced built in data acquisition system combined with PID Control.
- Four universal inputs for data recording and two PID control loops with a full color 320x240 pixel graphic TFT display.
- Configurable real time views including horizontal and vertical trends, Horizontal and vertical bar graphs, alarm status and control loops.
- Optional Dual programmer supporting up to 100 programs with 25 segments each.
- Built in 50MB of non-volatile flash memory for data storage.



MHI Micropylretics
Heaters
International
www.mhi-inc.com

WWW.MHI-INC.COM • 750 REDNA TERRACE CINCINNATI, OH 45215 • PHONE: 513.772.0404 • FAX: 513.672.3333 • SALES@MHI-INC.COM

DISCOVER MHI

MHI is trusted by companies in various industries, including...



MHI Micropylretics
Heaters
International
www.mhi-inc.com

WWW.MHI-INC.COM • 750 REDNA TERRACE CINCINNATI, OH 45215 • PHONE: 513.772.0404 • FAX: 513.672.3333 • SALES@MHI-INC.COM